



Informations!

**Trailers for
Swap Traffic**

**Rapid Changeover.
Safe. Variable. Innovative.**

S.C.F

A.W.F

Z.W.F

A.C.F

The Trailer Company.



On Land, on Water and in the Air

Freight comes from many different places and in many different ways, with ships on maritime routes, with cargo planes in the air, or on overland roads. Containers and loading units in combined and inter-modal traffic are an integral part of the Trans-European traffic network. This means that you are here today, gone tomorrow; for you it is this today, that tomorrow, and no matter what, you must always be quick and flexible. Flexibility may be something special for others, for you it is normality, which is why you need a flexible vehicle to cover all the different formats and weights of the freight in your branch, for your safety and for the safety of your freight. From overseas container freight to swap containers for flexible short-distance freight.

Schmitz Cargobull has the right solution for you.



The Hole

When the country spends more than it earns, there is a hole in the budget. When the father of a family overdraws his bank account at the end of the month, he has budgeted badly and badly budgeted means: spending more than comes in. There are only two solutions to this problem. Firstly, income increases or secondly, expenditure decreases. Raising income is relatively easy for a country, but for an independent entrepreneur it is easier said than done – new contracts do not fall from the heavens and the only thing that can help is to act with foresight, for example considering the follow-on costs before making an investment. What is the use of a super bargain if running costs gobble up earnings? Keeping an eye on costs for energy, fuel, repairs and spare parts, servicing, support and downtimes – that is sound budgeting.



Free Choice

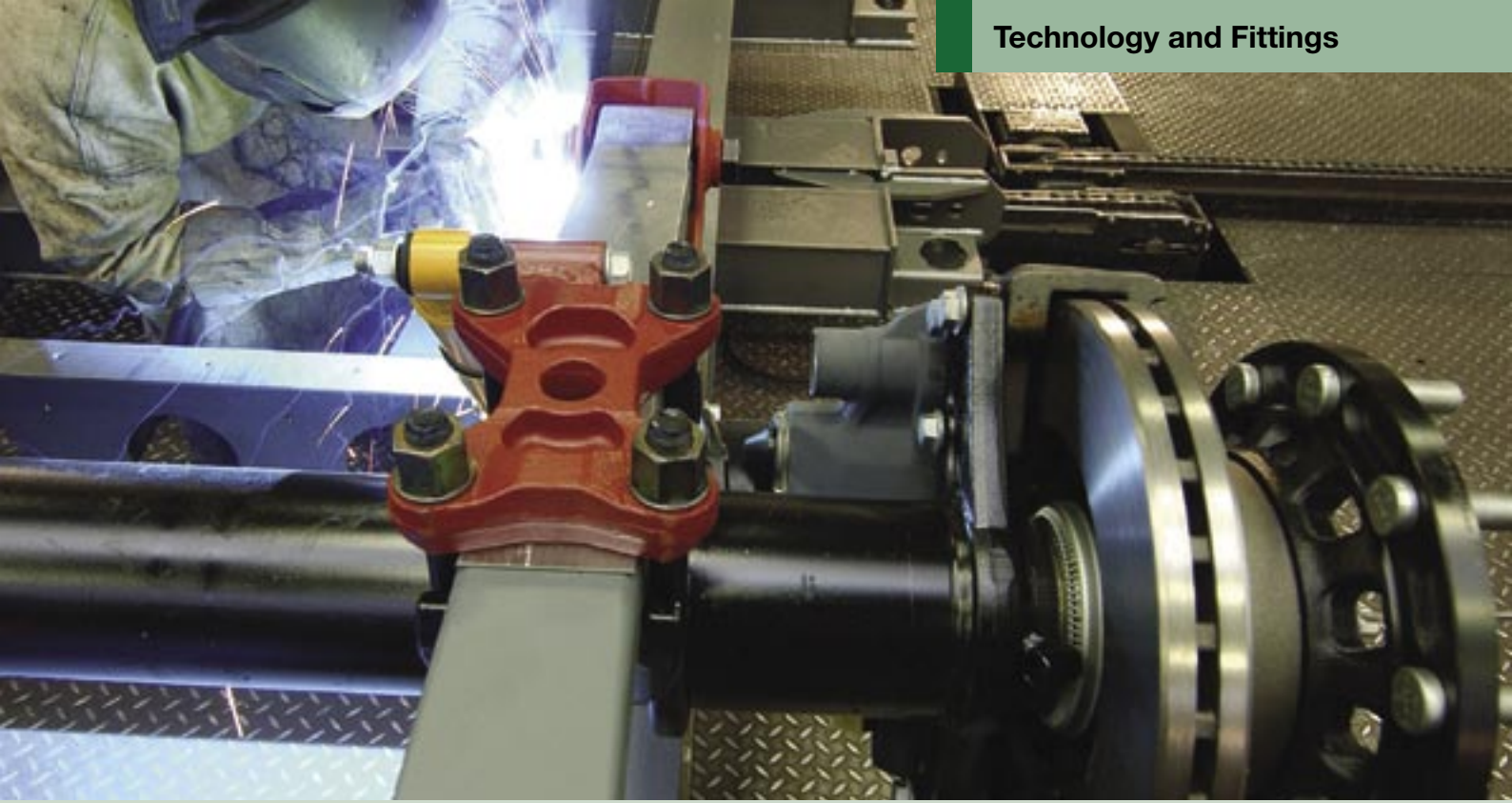
Variable, safe and easy to use are necessary prerequisites for container freight. A wide range of chassis will suit nearly all freight solutions.

The weight-reduced chassis tempts with its

- high chassis load-carrying capacity.
- hot dip galvanization of various heavily used components, e.g. locks and extensions.

The chassis frame impresses with its

- top quality branded components.
- either disc or drum brakes.
- various tyre and rim versions.



The semi-trailer chassis SCF EURO III is extremely flexible in use and with 385/55R 22.5" tyres does not exceed the permitted height, even with a HighCube container.

The service-free front pullout in conjunction with the MULTILOCK® locking system allows the permit-free transporting of 45' EURO containers.

The protected position of the air and light connections ensures problem-free stacking of all containers and avoids damage to the couplings.

Two pairs of ferry lashings are standard.

Relay Races

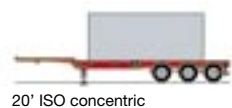
Relay races began at a time when important messages written on rolls of parchment were passed from one courier to another until they reached their final destination. Much has changed since these times. Nevertheless, the idea has remained constant – the baton must cross the finishing line. What is the point, therefore, of being the first to cross the finishing line if you do not have the baton. The laugh is always on the loser ... this is nowhere truer than for swap chassis. The most important thing is that the freight arrives safely, which is why we pay so much attention to the safety of your load. Locks, safety when changing positions and easy-to-use catches are all critical issues and we concentrate on them for your benefit.



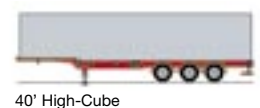
Why Buy Stocks and Shares?

If you want to invest your hard-earned money on the stock exchange well and profitably, you have two choices. Either you decide you want a high return, but then you carry a high risk, or you chose a safe investment, but then the returns are probably lower. When you invest in a Schmitz Cargobull chassis, things look different – here you can have both. Your invested capital brings returns with every assignment your company carries out and your risk is minimal because thanks to the quality of our product, you can reckon with a considerable long life cycle, as well as exemplary service friendliness. Your capital is safe and it brings returns.

On the Ocean Routes



20' ISO concentric



40' High-Cube



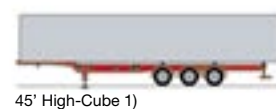
20' ISO flush rear frame



45' ISO
\$70 special permission is required (D)



30' ISO



45' High-Cube 1)
\$70 special permission is required (D)



2 x 20' ISO



45' High-Cube EG 2)
No authorisation required



40' ISO



45' High-Cube EG 2)
\$70 special permission is required (D)
Without front extender



Containers arrive on the ocean routes and are transported further on overland roads. Overseas, international freight – that also means different sizes, different weights, different requirements.

This is why Schmitz Cargobull has a program of transport containers ranging from 20', 30', 40' ISO, 40' HighCube, 45' ISO to 45' HighCube – plus 20' and 30' tank containers – an extensive range with something for everyone and the right solution for all.

The chassis:

- Stable construction, particularly in the neck area, which acts as a reserve against overloading.
- Tapering in the front area allows less dead weight when stability is reduced.

The chassis frame:

- ROTOS axle unit with effective braking thanks to large disc brakes with long-time standing time for pads.
- EBS and RSP (Roll Stability Program) are standard.
- Shock absorbers with integrated stop positions for controlled rebounding to avoid damage to the air suspension bellows.



Everything that Goes With It

We will customise your container trailer according to your requirements – in other words exactly how you need it.

The Extras

- A working platform with non-slip coating for your safety and ease of use.
- Tank chassis are fitted with all you need for transporting tank containers: Steel gully, four hose tubes with lockable steel hose tube boxes, gratings between the rear container arms over the full width of the vehicle and a pull out folding ladder with climbing aid.



Extensions

- Rear and front extensions are bolted.
- Each extension is fitted with low maintenance smooth running bearings. This means: low noise, smooth movement and high repair friendliness.
- The durable sliding blocks are easy to change. This means low service costs.
- Pneumatic extension locking. Your benefit: lower risk of forgetting the lock on one or the other side since operation is easy and above all quick.

The Locks

- STEPLOCK®: Robust construction and simple function allow minimal overhang at rear, which means better trailer load when transporting 20' containers that are flush to the rear.
- MULTILOCK®: Optimal locking of all sea containers in the front section.
- Retractable Lock: Ideal for easy locking in the centre sections of a goose-necked chassis (2 x 20').

Seat Belt Obligation

Why belt up for those few feet extra? How often do you have to make this decision? And yet the same can happen on short journeys – nipping round to the baker's – as can happen on long trips on holiday. So, for your own safety, never "forget" to put your seat belt on. This forgetfulness can have even more serious consequences, for example when transporting containers on short-distance and familiar routes. It just does not seem worth it to operate the extension lock for that short distance. But the same applies here as with a safety belt, which is why Schmitz Cargobull has developed a pneumatic extension locking system. This works so quickly and so easily that you simply cannot "forget" it.



A Cold Strengthens the Immune System

A cold is nevertheless unpleasant, but it trains our immune system to ward off worse illnesses, and nobody stays at home just for a cold. But what happens with injuries from accidents at work – slipped and broken a leg, a fortnight in hospital. That is not so easy to shake off and it also costs money. This is why safety in the workplace is the first law and this is true when it comes to constructing chassis. Being able to operate all elements easily, conveniently and safely is an absolute prerequisite for a safe workplace. We think it is really important, and you should too.

Dwell in the Land ...



Satisfied perhaps, but not necessarily contented. Traffic on the road at home is not a bed of roses. Flexibility is here another prerequisite for successful management. Schmitz Cargobull provides you with solutions for transporting all established swap containers with various parking heights for various applications. Our industrial know-how is for your safety.

Your advantages – day for day

- The optional hot dip galvanized chassis offers optimal but low care corrosion protection.
- Chassis versions in normal and maxi-versions.

- The air suspension ensures easy transporting. Various parking heights possible.
- The optional mechanical telescopic truck and trailer towbar for trailer swap body or the length adjustable towing bar for a central swap body means flexibility when using.
- The rear circular tube, which is used as the collision bumper is robust and practical in everyday life. Thanks to its bolted construction, it can be rapidly replaced and is therefore maintenance friendly.
- Three positions for precision rolls, arranged as they are needed in practice, in conjunction with

an adjustable side catch make for correct and secure changing of positions with the swap bodies.

Swap Bodies

Schmitz Cargobull can also provide you with the ideal solution in this sector. For instance:

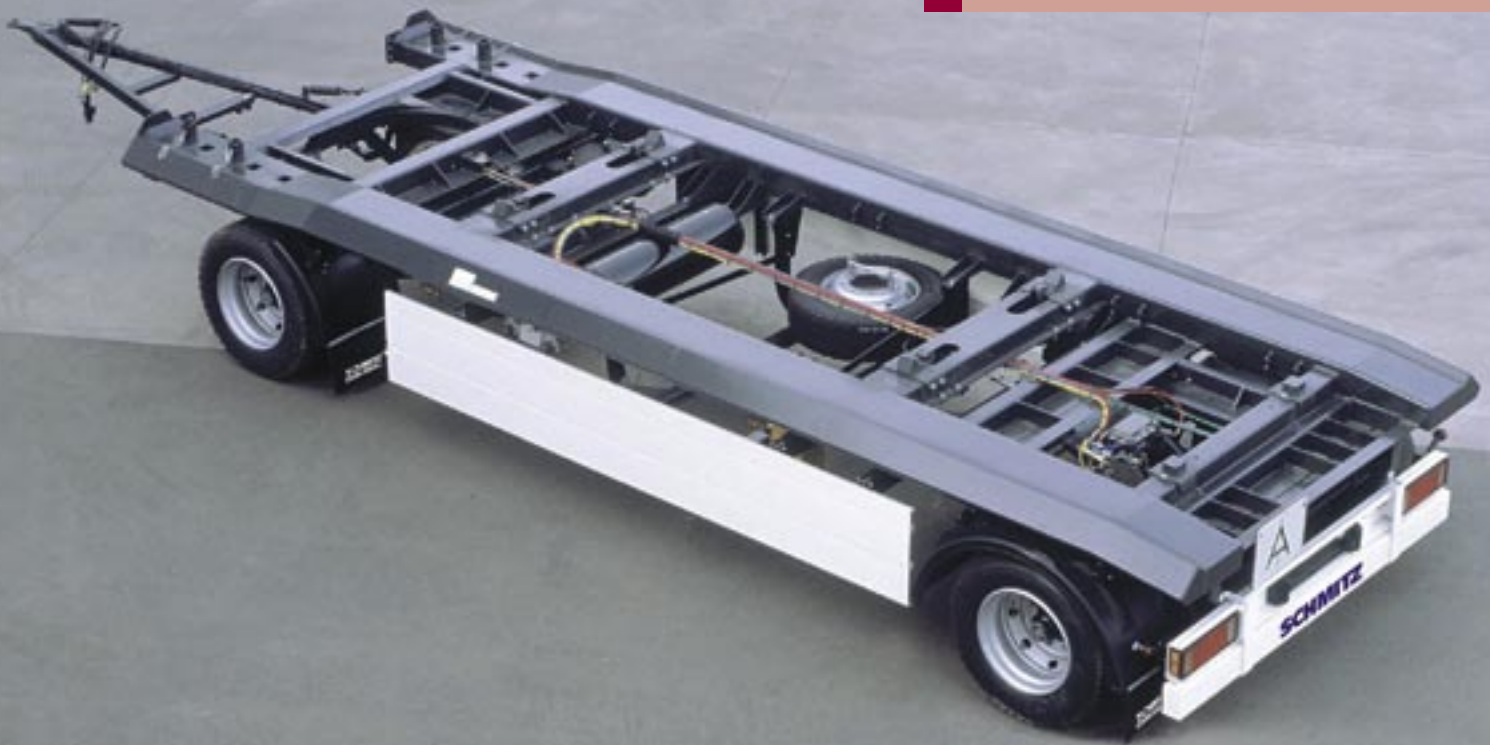
- **Swap containers** made of Ferroplast have tremendous safety advantages when transporting dry freight. Thanks to the burglar-resistant sandwich construction they transport goods reliably.
- **Tarpaulins for swap bodies** mean for you quick loading and easy to unload and load thanks to the sliding tarpaulin.



Less is More

Less in life is perhaps not perfect but less repairs mean less downtimes and downtimes mean that costs are still incurred but no income is coming in, which is why the repair-friendliness of a vehicle is a decisive factor when it comes to operating efficiency. As early as when they develop a chassis, the constructors at Schmitz Cargobull take all aspects into consideration to ensure rapid servicing and repair. Less is more – less repairs.

Cradles



Cradle or external guidance?
Schmitz Cargobull offers you two variations for transporting containers and cases with a trailer. A cradle has the advantage of low weight, and external guidance is a glutton for punishment and this allows the transportation of steel cases of 5.5 m up to 7 m in length – the ideal solution for the recycling and construction sector since their journeys are mainly short.

Choose yourself, make your own decision.

– Sophisticated series technology which means a long life cycle for individual components and repair-friendliness.

- Air suspension on front and rear axles allows separate adjustment of vehicle height and makes it easier to move the container.
- The pneumatic locking mechanism ensures reliable anchorage of the containers.
- You can operate safely and easily the brakes, air suspension and container locks with the control panel.
- As an extra you can choose between single or twin tyres for larger loads.
- The foldaway side collision bumper can be used as advertising space.



The All-Round Trusted Packet

All-round trust from one supplier – we call it our customer service. From the initial meeting right up to our hotline manned by our experts from the different sectors. From individual financing plans up to 24-hour breakdown service. From the handover of your new trailer up to the possible trade-in or sale of the used vehicle later on. We are with you from the beginning to the end.

Professional advice given at your company

Our customer service department will advise you:

- on site,
- anywhere in Europe,
- about new and second hand vehicles,
- about all of the vehicle services.

Purchase, hire-purchase and leasing

Cargobull Finance will help you make your decision:

- with a financing plan.
- customised to your individual needs.
- with a full services packet.

You will never be alone again

We will still be by your side even after you make your purchase:

- more than 700 service stations throughout Europe.
- with fully trained experts.

We will ensure:

- short downtimes.
- that planned maintenance is carried out using original spare parts, so that your vehicle will be back on the road as fast as possible.



Left in safe hands

First class from second hand. The Cargobull Trailer Store – you will find the right vehicle here. Without having to look for too long. Our European Cargobull Trailer Stores offer you a choice of more than 1.400 used commercial vehicles made by different manufacturers, in tested quality, in ten networks working together. Naturally together with a customised financing plan.

Gotha is waiting for you

Gotha is located in the northern foothills of the Thuringian forest. A peaceful setting for the training of your engineers and well-known for the manufacturing of transmission systems, wagons and trailers. Your vehicle will be waiting for you here. You can pick it up here. You will be individually and personally informed about all of the special features. In a pleasant atmosphere. It is not every day that you win a new “Partner” for such a demanding job! Gotha is waiting for you. Welcome to Gotha.

Success Needs the Correct Partner

A partnership needs proximity. Proximity requires trust. Trust comes from satisfied customers. Therefore it is our aim to continually re-win your trust. We guarantee a team of professional staff members with experience in company management, development, project management, production, quality assurance and sales, in brief: People who work to ensure the success of our products – committed, result orientated and reliable partners. In nine production sites and 32 countries in Europe.



Range of commercial vehicles:

Reefer Semitrailer



Curtainsider



Tipper trailer



Intermodal Transport



Range of services:

Consultation
Financing
Full Service
Spare parts
Repairs
Telematics
Second-hand vehicles
Service partner network